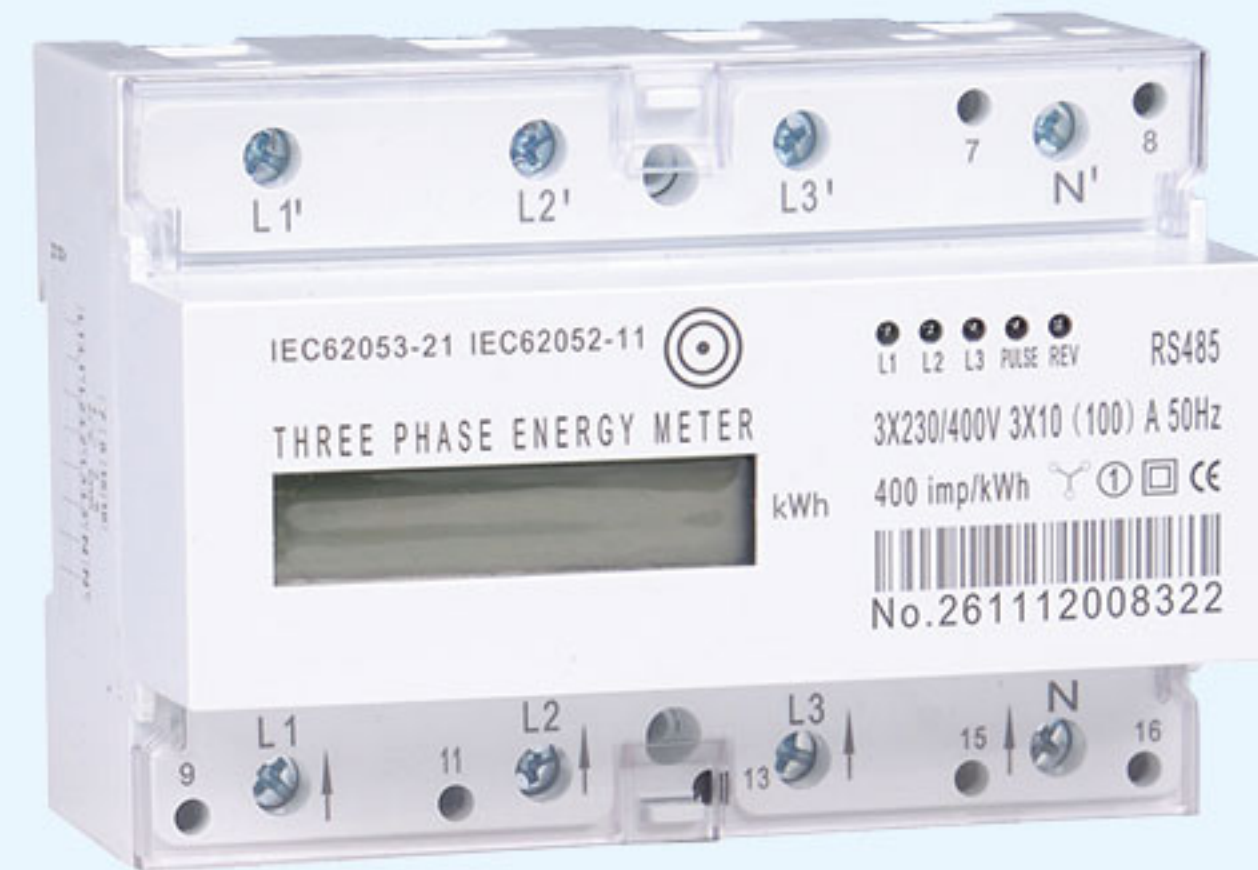


DT(S)S238-7 M (D3704)

three phase din rail type multi-function energy meter



D3704

The meter is used in three phase four wire/three phase three wire /two phase three wire power grid. The meter is designed to measure AC active energy and variable parameter. It has remote read communication port RS485. It is a long life meter with the advantage of high stability, high over load capability, low power loss and small volume.

Basic Function

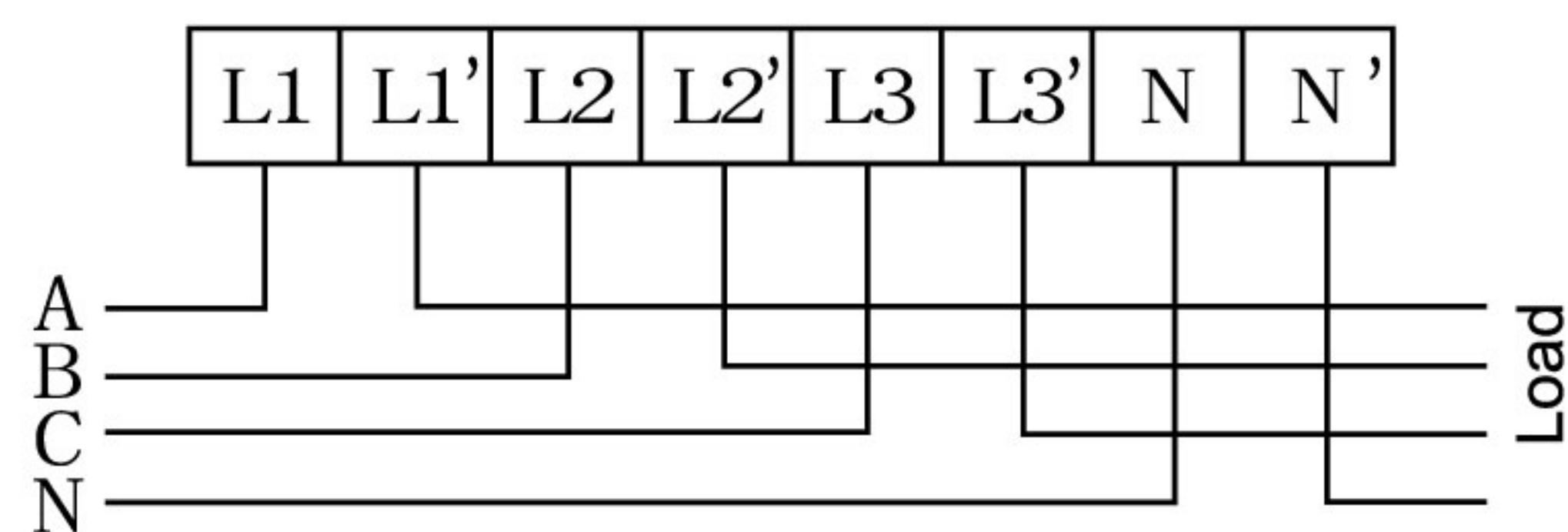
- LCD display 6+2, touch button for LCD display step by step
- Bi-directional total active energy measurement, reverse active energy measure in the total active energy
- The meter also display real voltage, current, active power, reactive power, power factor, frequency, import active energy, export active energy, resettable interval energy
- Pulse LED indicates working of meter, Pulse output with optical coupling isolation
- Loss phase LED indication, Reverse connection LED indication
- RS485 communication port, MODBUS-RTU protocol
- Energy data can store in memory chip more than 15 years after power off
- 35mm din rail installation

Technical Data

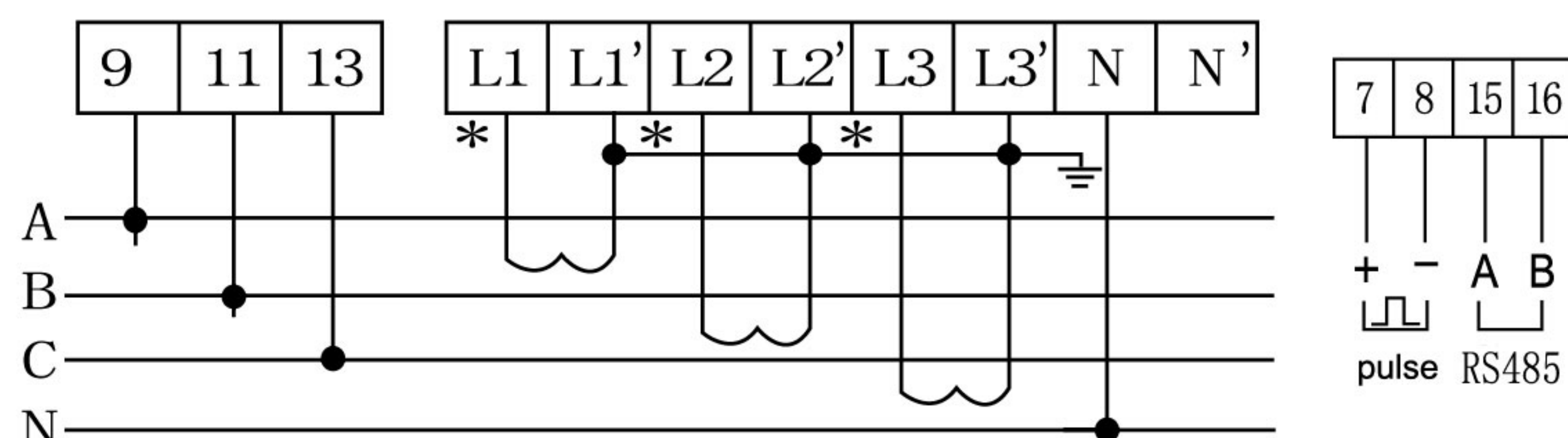
Rate voltage AC	DTS238-7 M three phase four wire 3x120/208V, 3x220/380V, 3x230/400V, 3x240/415V (0.8~1.2Un)		
	DSS238-7 M three phase three wire(two phase three wire) 2x120/208V, 3x220V, 3x380V, 3x400V (0.8~1.2Un)		
Rate Current / Frequency	5A/CT ,1.5(6)A ,5(60)A , 10(100)A / 50Hz or 60Hz ± 10%		
Communication port	RS485 port, baud rate 1200~9600 bps, default is 9600bps, address 1~247, None parity, stop bits 1, data bits 8.		
Connection mode	CT or Direct type	Accuracy class	1% or 0.5%
Power consumption	<2W/10VA	Start current	0.004Ib
AC voltage withstand	4000V/25mA for 60s	Over current withstand	30Imax for 0.01s
IP grade	IP20	Executive standard	IEC62053-21 IEC62052-11
Work temperature	-25℃ ~70℃	Pulse output	Passive pulse, 80 ± 5 ms

Wire connection

(1)three phase four wire direct connection



(2)three phase four wire through current transformer connection



Outline dimension

